

CENTRAL HALL WESTMINSTER

Central Hall is an affordable, versatile, central London venue which offers organisers thirty various size meeting rooms with natural day light and black out facilities, plus numerous other spaces for syndicate rooms, offices, exhibitions and dinners

We operate as a conference and exhibition centre, a concert hall, an art gallery, serviced offices, a tourist attraction and a public café.

Our dedicated event managers will look after every aspect of your requirements. We can help you with theming or entertainment and we offer the latest audio-visual technology with qualified technicians. Central Hall offers a delicious catering selection and we will happily design a menu to suit your particular event.

The public café is a modern cafeteria open Monday to Friday 8am to 4pm, Saturday and Sunday 9am to 4pm, serving a selection of refreshments, light snacks, lunch and welcomes coach parties. Afternoon tea can be arranged with prior booking, please speak to our Event Managers.

In the following pages you will find specific details on our conference and exhibition facilities with explicit floor and room plans. Please pull out the outer cover of this brochure to view our floor plans and facility chart to assist in making your choice of room or rooms for your event.

CONTENTS

LOWER GROUND FLOOR P 2/3

GROUND FLOOR P 4/5

LEVEL ONE P 6/7/8

LEVEL TWO P 9

LEVEL THREE P 10

LEVEL FOUR P 11

LEVEL FIVE P 12



CENTRAL
HALL
Westminster

LOWER GROUND FLOOR has a combination of rooms that can be used as individual meeting rooms or in conjunction, ideal for mid size conferences that require breakouts, exhibition and catering space. These rooms also combine to form our main art gallery space, The Westminster Gallery. These are situated near to our cafe and conservatory and close to all amenities.

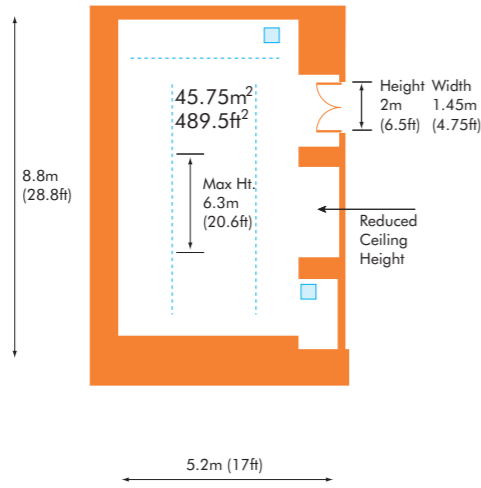
KEY to floor plans

- Meeting/function room
- Other areas available for hire
- Circulation areas
- Public facilities
- Goods/passenger lift
- Toilets
- BC Baby cubicle
- DC Disabled cubicle

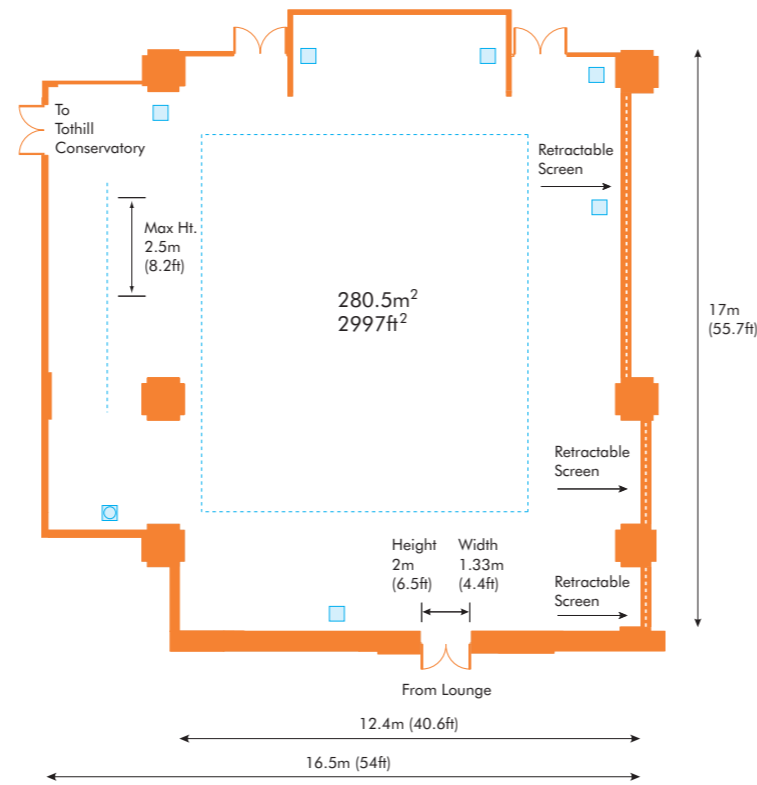
KEY to room plans

- 13 amp socket outlet
- 3 Phase outlet
- Track lighting
- Air conditioning unit
- Window
- Retractable screen

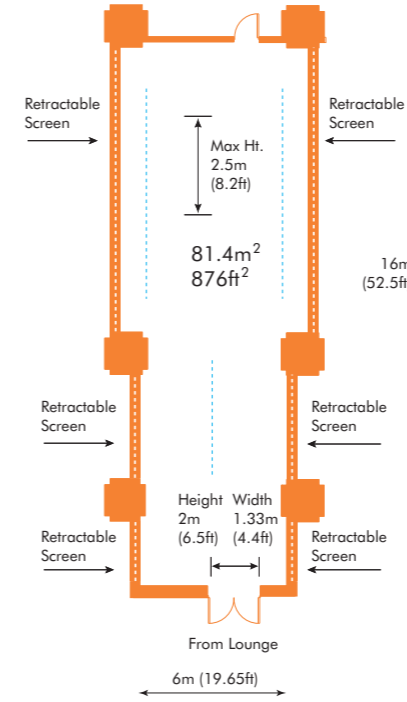
ALDRSGATE CONSERVATORY



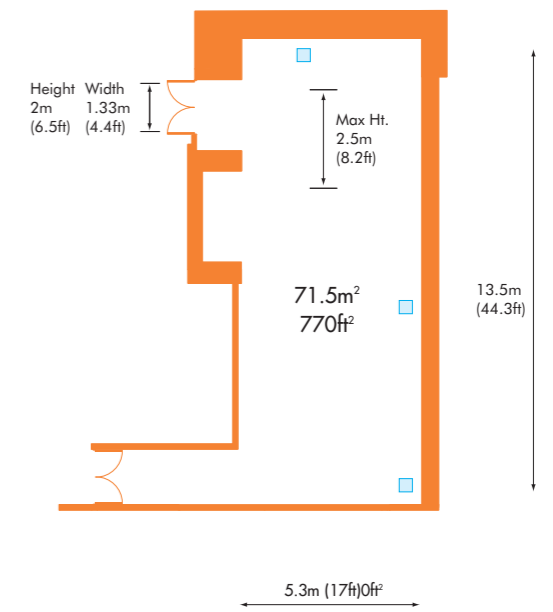
ALDRSGATE ROOM



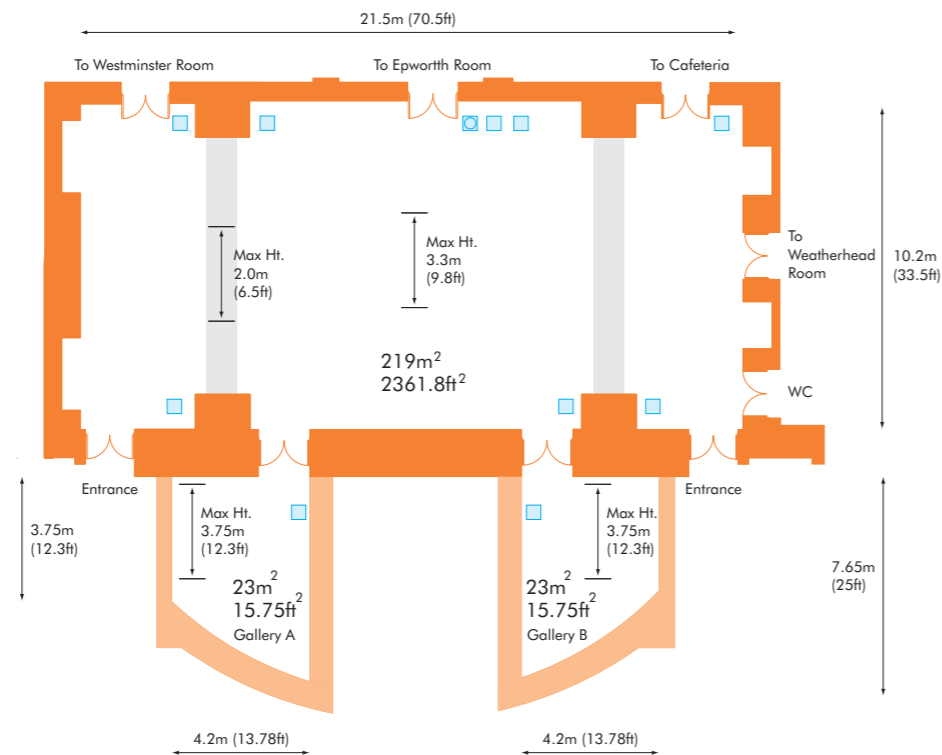
EPWORTH ROOM



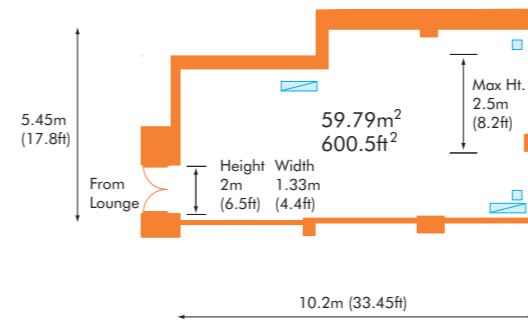
CONSERVATORY



WESTMINSTER FOYER



OXFORD ROOM



Facilities for all rooms

Technical

- PA facilities
- A/V Equipment
- Video Conferencing
- 3 phase power supply

Services

- Catering facilities
- Internal/External telephone points
- Cafeteria open daily
- Toilet facilities
- Disabled access - limited

Lighting

Most rooms on the lower ground level have ceiling mounted feature lighting with electronic dimmer controls and blackout facilities.



GROUND FLOOR

offers some of our smaller meeting rooms. These are ideal spaces for interviews, or brainstorming sessions. The Broadbent Room has ideal disabled access from the front of the building.

The Garage area is available for unloading and loading of goods. Please speak to your Event Manager for more information.

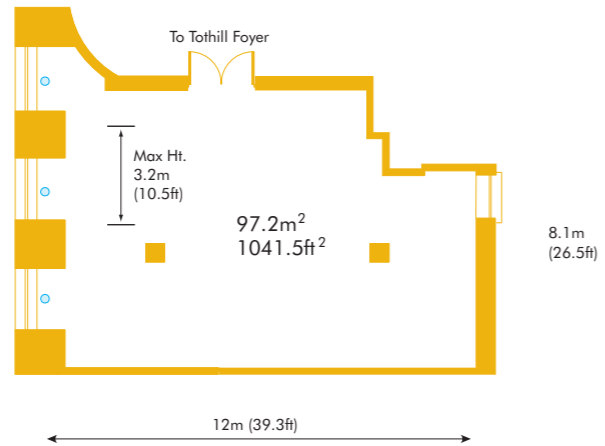
KEY to floor plans

- Meeting/function room
- Other areas available for hire
- Circulation areas
- Public facilities
- Goods/passenger lift
- Toilets
- BC Baby cubicle
- DC Disabled cubicle

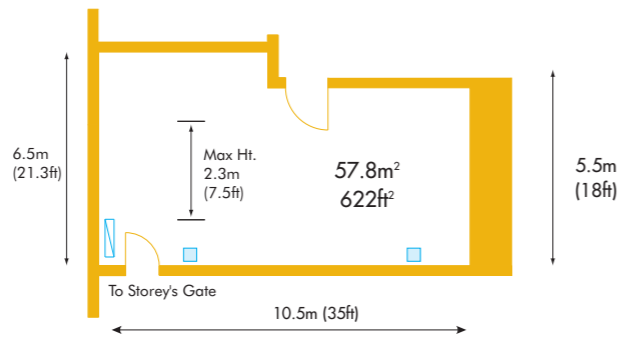
KEY to room plans

- 13 amp socket outlet
- 3 Phase outlet
- Track lighting
- Air conditioning unit
- Window

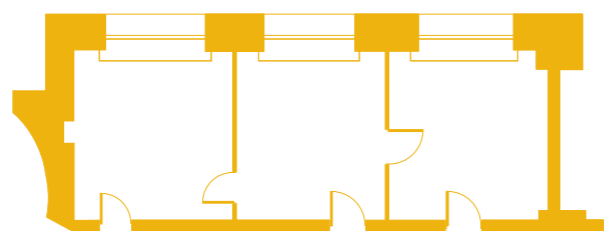
EMMANUEL ROOM



BROADBENT ROOM

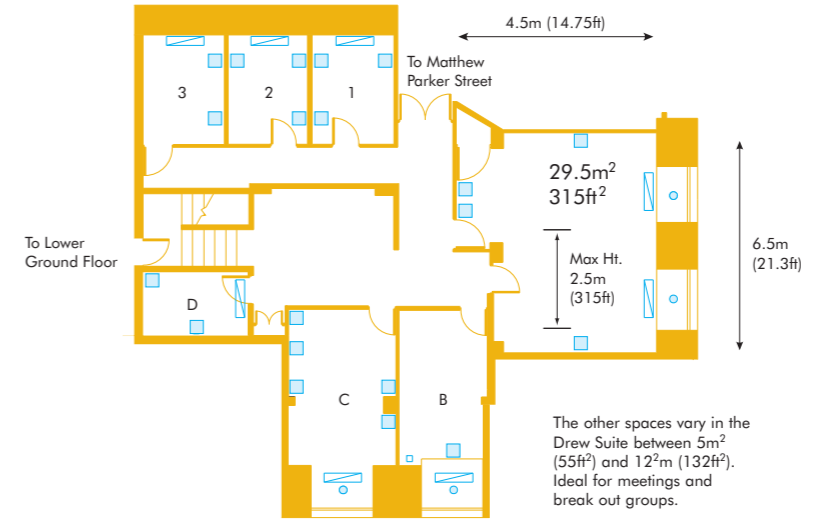


OTHER SPACES



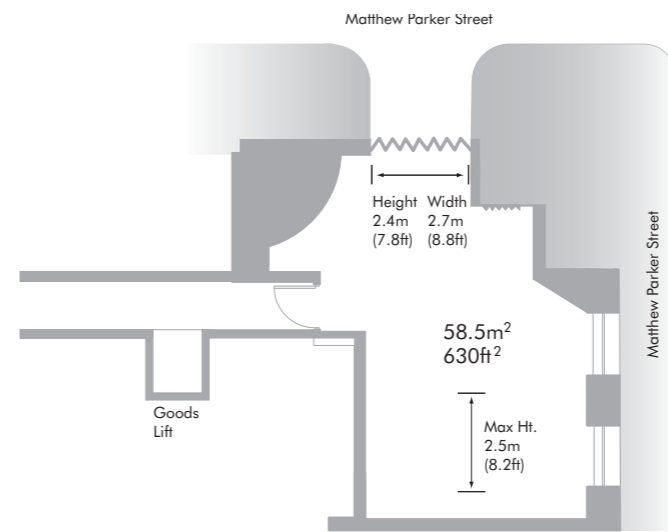
These spaces vary in size between 15m² (163ft²) and 25m² (277ft²). Ideal for meetings and break out groups.

COMMUNITY SUITE



The other spaces vary in the Drew Suite between 5m² (55ft²) and 12m² (132ft²). Ideal for meetings and break out groups.

GARAGE/LOADING BAY



The garage space is available for loading and unloading between 8am to 9pm. It is recommended that you check with reception 020 7222 8010 for availability on the date of your booking.

Facilities for all rooms

Technical

- PA facilities
- A/V Equipment
- Video Conferencing
- 3 phase power supply

Services

- Catering facilities
- Internal/External telephone points
- Disabled access
- Toilet facilities
- Loading bay

Lighting

Most rooms on the ground level have ceiling mounted feature lighting with electronic dimmer controls and blackout facilities.

LEVEL ONE

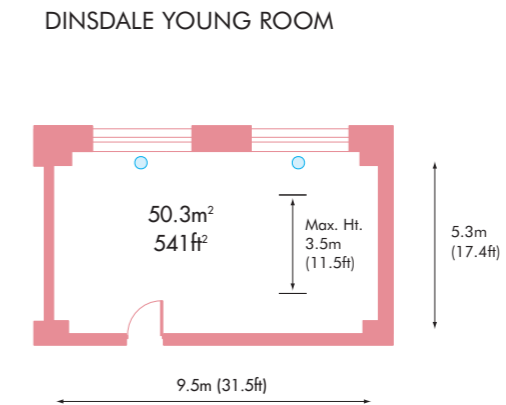
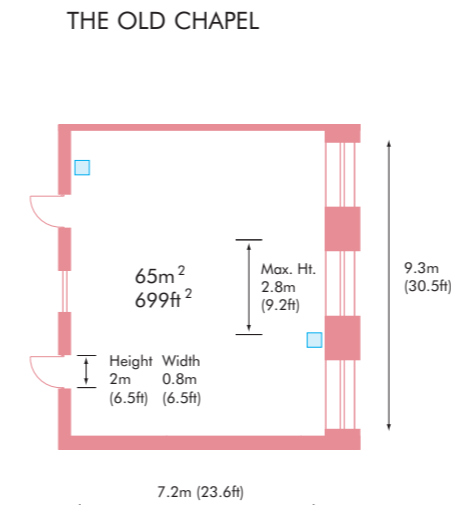
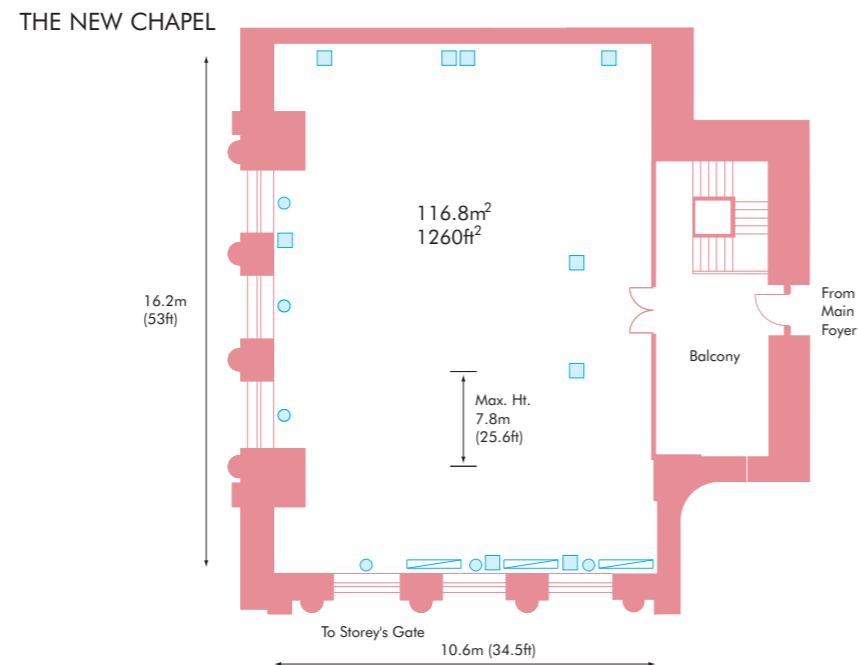
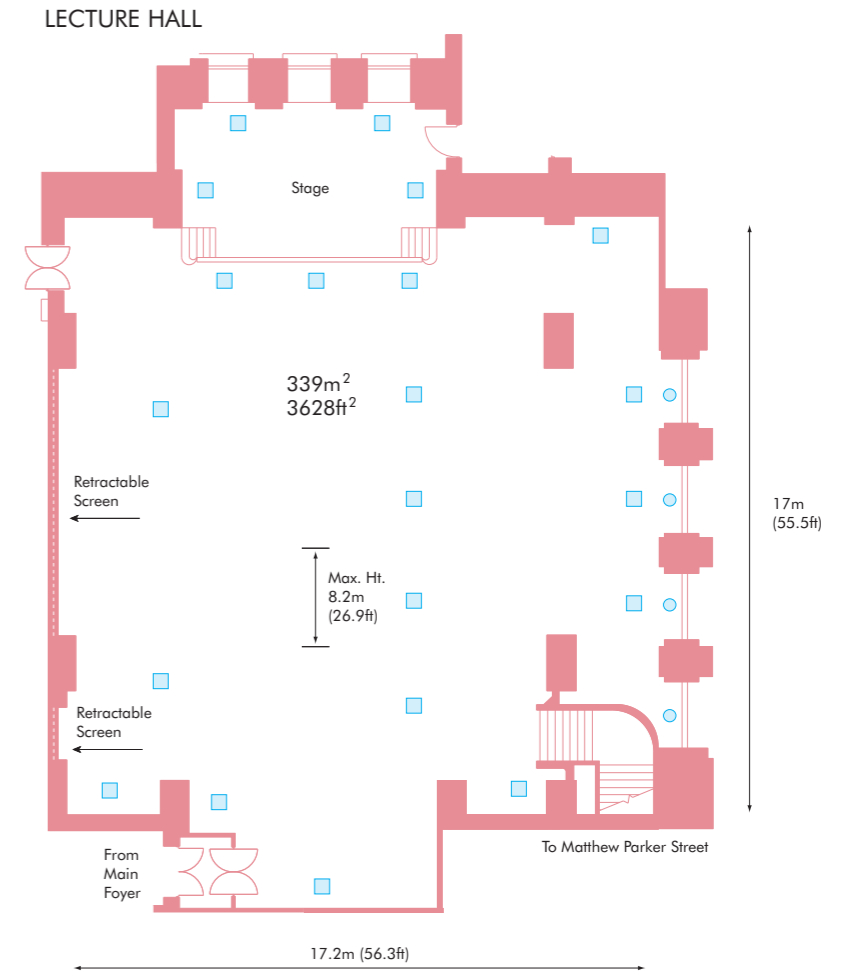
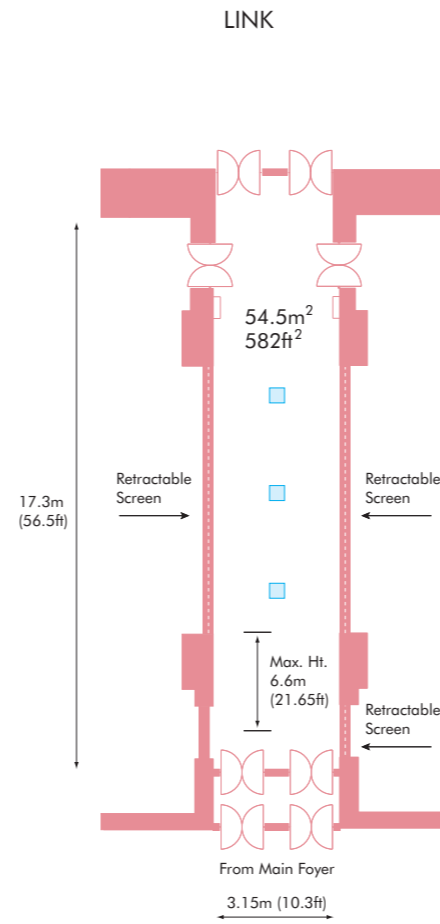
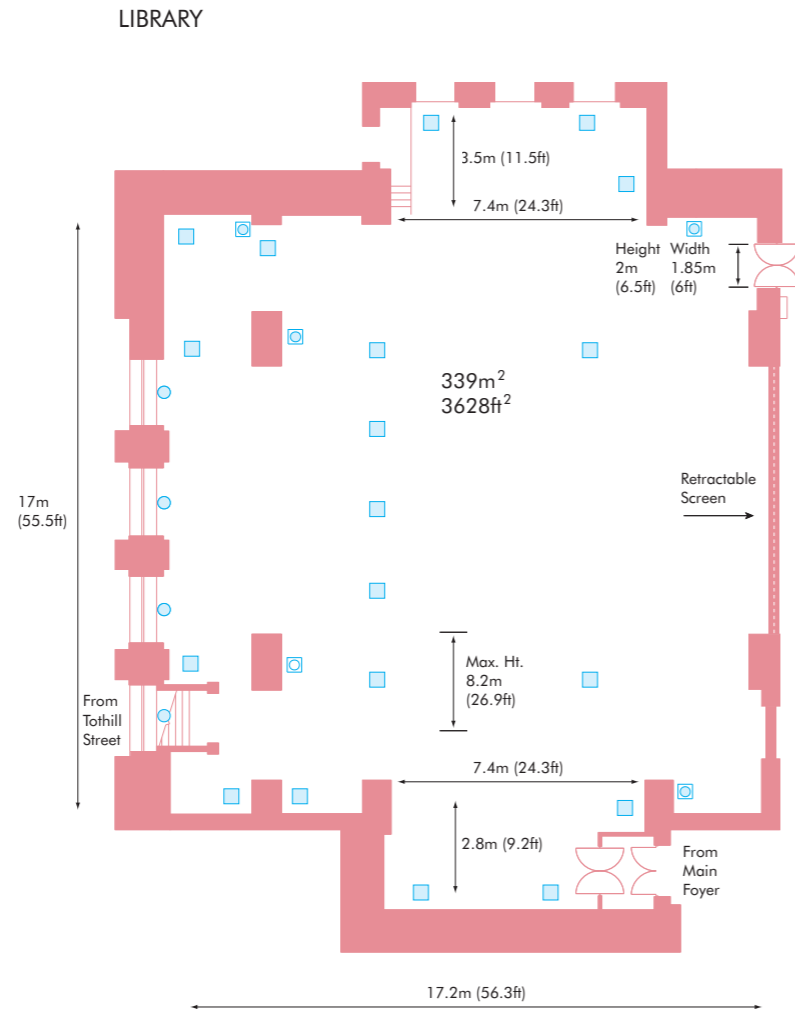
offers two of our largest spaces, the Lecture Hall & Library. These can be used independently, for example, utilising one for your meeting and the other for catering or by using the link, can be used as one large meeting or exhibition space. Our new Chapel is available, with prior arrangement, for musical recitals most evenings.

KEY to floor plans

- Meeting/function room
- Other areas available for hire
- Circulation areas
- Public facilities
- Goods/passenger lift
- Toilets
- BC Baby cubicle
- DC Disabled cubicle

KEY to room plans

- 13 amp socket outlet
- 3 Phase outlet
- Track lighting
- Air conditioning unit
- Window
- Retractable screen



Facilities for all rooms

Technical

- PA facilities
- A/V Equipment
- Video Conferencing
- 3 phase power supply

Services

- Catering facilities
- Internal/External telephone points
- Toilet facilities
- Disabled access

Lighting

Most rooms on the first level have ceiling mounted feature lighting with electronic dimmer controls and blackout facilities.

Please note all dimensions shown on this page are for reference only and may vary slightly. If you need more accurate information contact the event manager.

LEVEL ONE & TWO offers two floors each providing two mid sized rooms ideal for training purposes. In addition, there are various breakout rooms, which can either be used in conjunction with our mid-sized rooms as breakout spaces or for catering, or independently for those smaller meetings.

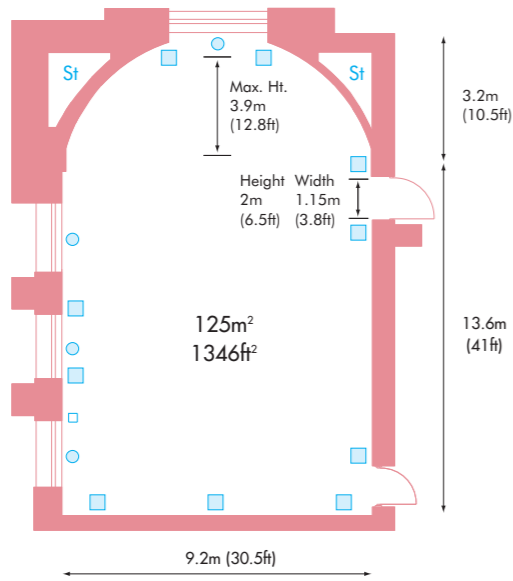
KEY to floor plans

- Meeting/function room
- Other areas available for hire
- Circulation areas
- Public facilities
- Goods/passenger lift
- Toilets
- BC Baby cubicle
- DC Disabled cubicle

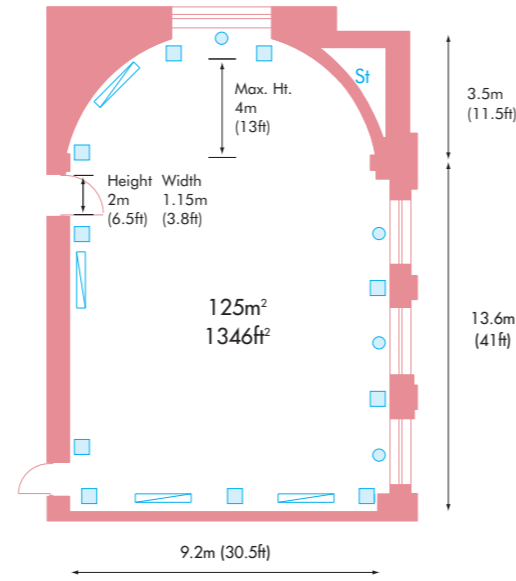
KEY to room plans

- 13 amp socket outlet
- 3 Phase outlet
- Track lighting
- Air conditioning unit
- Window

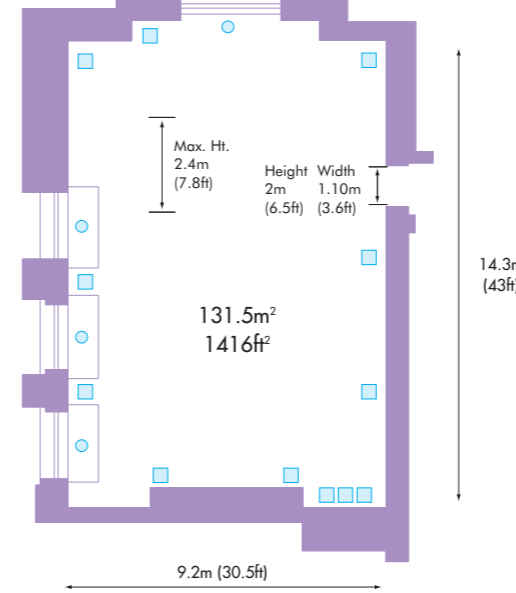
ROBERT PERKS ROOM



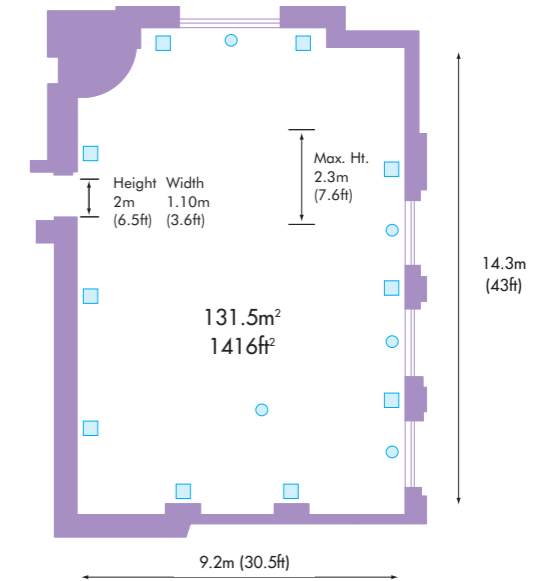
GEORGE THOMAS ROOM



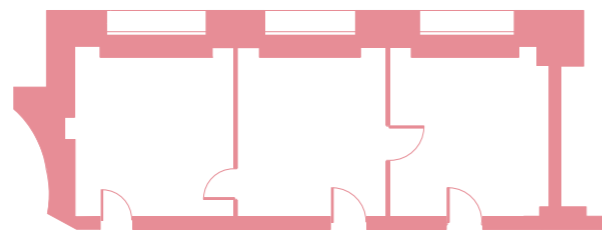
DONALD ENGLISH ROOM



WILLIAM SANGSTER ROOM



OTHER SPACES



These spaces vary in size between 8m² (81ft²) and 25m² (273ft²). Ideal for meetings and break out groups.

OTHER SPACES



These spaces vary in size between 22m² (240ft²) and 26m² (280ft²). Ideal for meetings and break out groups.

Facilities for all rooms

Technical

- PA facilities
- A/V Equipment
- Video Conferencing
- 3 phase power supply

Services

- Catering facilities
- Internal/External telephone points
- Toilet facilities
- Disabled access

Lighting

Most rooms on the first and second levels have ceiling mounted feature lighting with electronic dimmer controls and blackout facilities.

LEVEL THREE & FOUR accommodates our Great Hall. Level three provides the stalls area, which has flexible seating and can also be used as exhibition space, while level four provides fixed seating in the balcony. In addition, both levels have numerous breakout spaces, either for use for larger conferences that require breakout spaces, or for those smaller meetings.

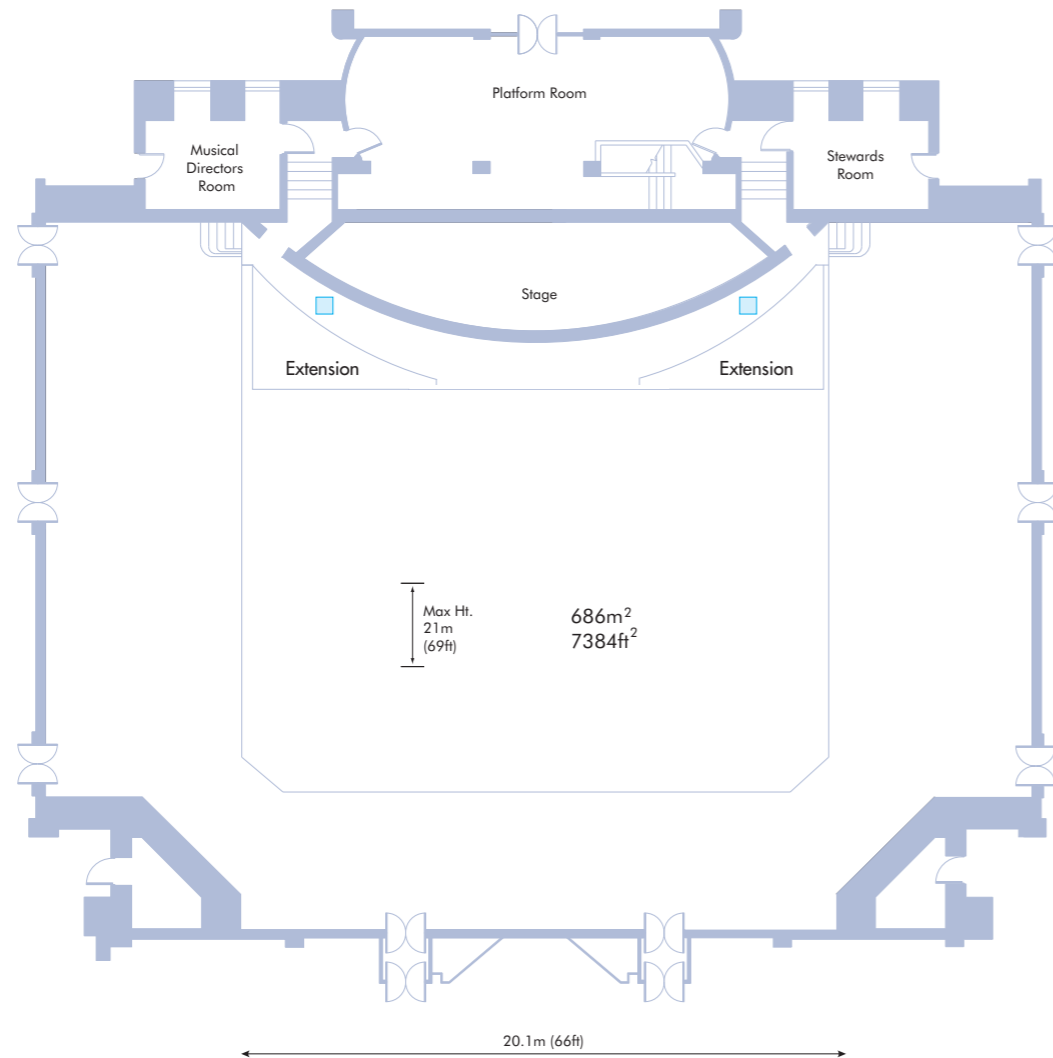
KEY to floor plans

- Meeting/function room
- Other areas available for hire
- Circulation areas
- Public facilities
- Goods/passenger lift
- Toilets
- BC Baby cubicle
- DC Disabled cubicle

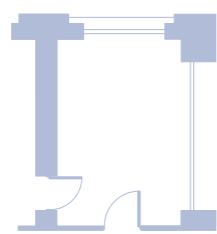
KEY to room plans

- 13 amp socket outlet
- 3 Phase outlet
- Track lighting
- Air conditioning unit
- Window

GREAT HALL (STALLS)

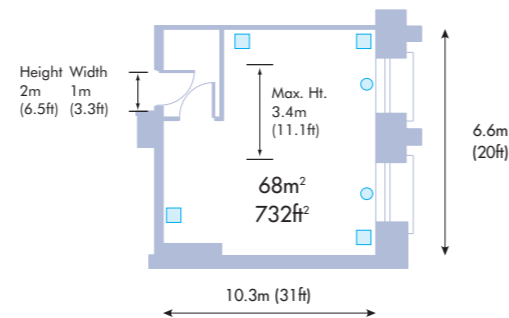


OTHER SPACES

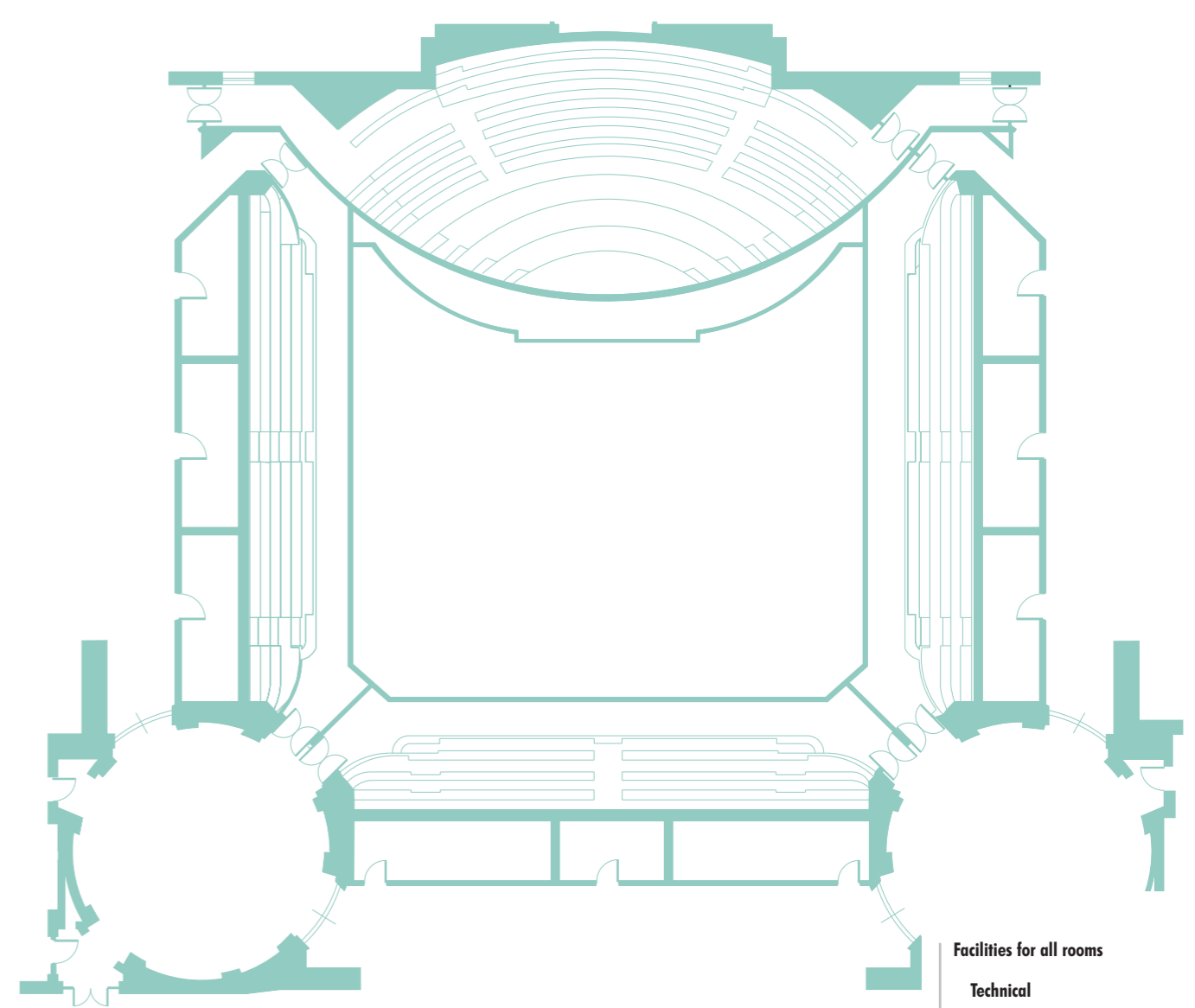


These spaces vary in size between 19m² (209ft²) and 25m² (275ft²). Ideal for meetings and break out groups.

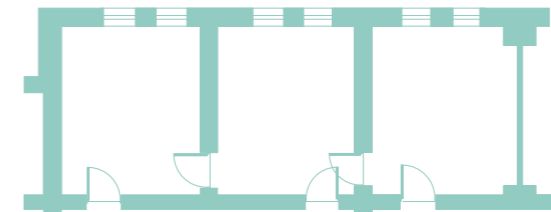
PRESIDENTS ROOM



GREAT HALL (BALCONY)



OTHER SPACES



These spaces vary in size between 15m² (165ft²) and 32m² (344ft²). Ideal for meetings and break out groups.

Facilities for all rooms

Technical

- PA facilities
- A/V Equipment
- Video Conferencing
- 3 phase power supply

Services

- Catering facilities
- Internal/External telephone points
- Cash bar points available
- Toilet facilities
- Disabled access

Lighting

Most rooms on the third level have ceiling mounted feature lighting with electronic dimmer controls and blackout facilities.



LEVEL FIVE

LEVEL FIVE offers various flat roof areas that are ideal for filming purposes with stunning views over central London, that include landmarks such as Westminster Abbey, the Houses of Parliament and the British Airways London Eye. Please speak to your Event Manager for further details.

KEY to floor plans

- Other areas available for hire
- 13 amp socket outlet
- 3 Phase outlet
- ISDN outlet

ROOF AREA



The roof area is accessible on request subject to a full specification of requirements.